

Kunzelmann-Esser Lofts

Exciting new Concept in Urban Living— Artist Live/Work Lofts

- Gallery Space
- Fitness Center
- Media Room
- Business Center
- Dark Room
- Kiln
- Storage Available
- Air Exchange System
- Track Lighting
- Washer/Dryer in Units
- Surface Parking Available
- Potters Wheel
- Board Room
- Cats Welcome

CALL TODAY!

(414) 647-8770

(414) 647-8779 FAX

710 West Historic Mitchell Street, #100
Milwaukee, WI 53204
(Enter office from 7th Street.)

www.gormancompany.com

Professionally Managed by

GORMAN
& COMPANY, INC.



Studio

- 560–731 Square Feet

Rent \$ _____/month

Security Deposit \$ _____

One Bedroom

- 682–1138 Square Feet

Rent \$ _____/month

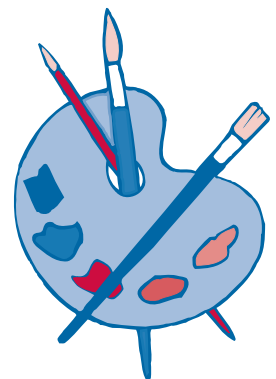
Security Deposit \$ _____

Two Bedrooms

- 908–1214 Square Feet

Rent \$ _____/month

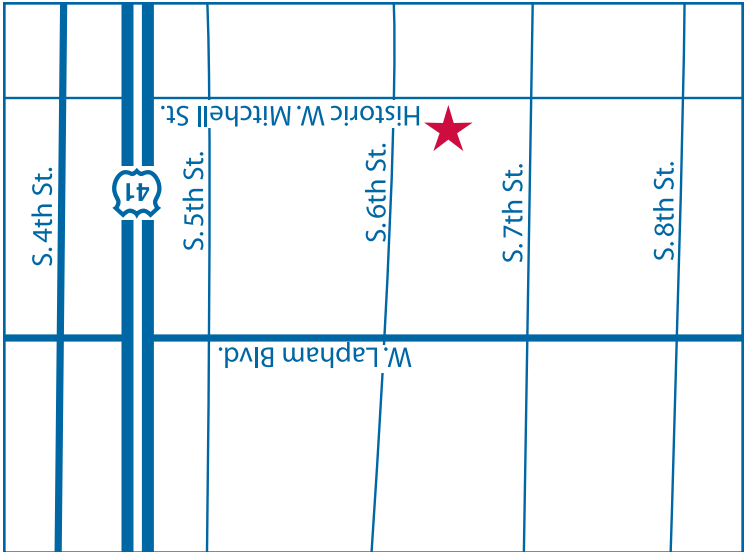
Security Deposit \$ _____



Exciting new Concept in Urban Living—Artist Live/Work Lofts

Kunzelmann-Esser Lofts

Kunzelmann-Esser Lofts
 710 West Historic Mitchell Street, #100
 Milwaukee, WI 53204



Maximum Household Incomes

- 1 Person \$ _____
- 2 Person \$ _____
- 3 Person \$ _____
- 4 Person \$ _____

PLACE
 STAMP
 HERE